

Continuous Glucose Monitoring System CGM APP-Start up Guide

i3 CGM System Overview

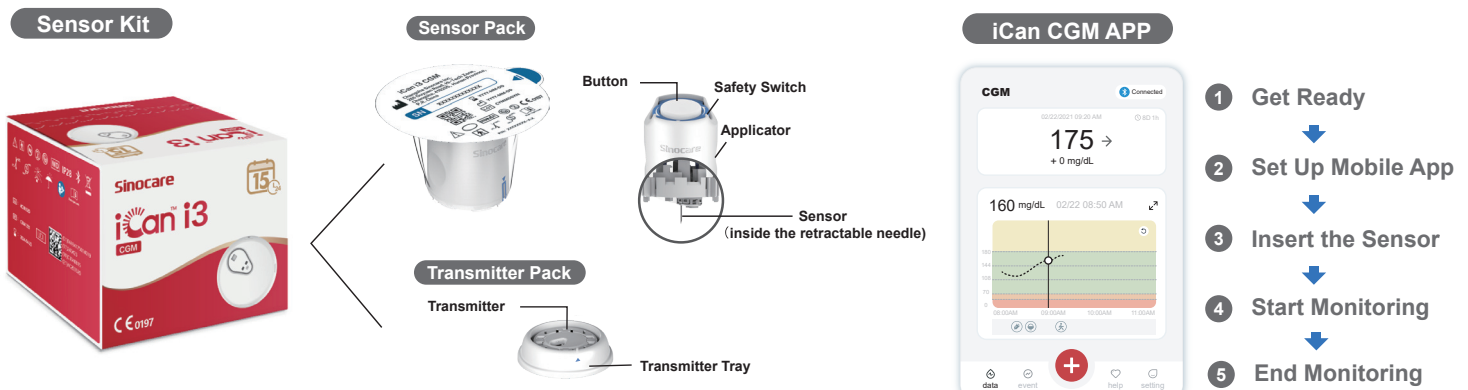
Refer to your User Guide for full System instructions and information.

The User Guide is provided in electronic form. You can visit iCan-cgm.com website to download a PDF.

If you need a hard copy of the User Guide, please contact the dealer or send the request to the email: support@icancgm.com. It will be provided within seven days for free.

If you have any questions, please send the email to support@icancgm.com

All graphics are representational. Your product may look different.



1 Get Started

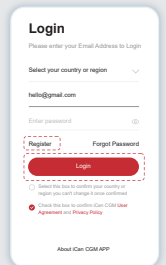
Step 1: Install iCan CGM App

Download the iCan CGM APP from App Store or Google Play



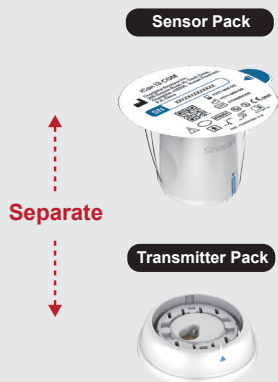
Step 2: Login to Your iCan CGM Account

- Login if you already have an account.
- Tap "Register" on the bottom if you are new to the system. The App will walk you through informational videos and screens. Tap "Next" to proceed until it brings you to the Scanning QR Code page. Keep your App open throughout the whole time.



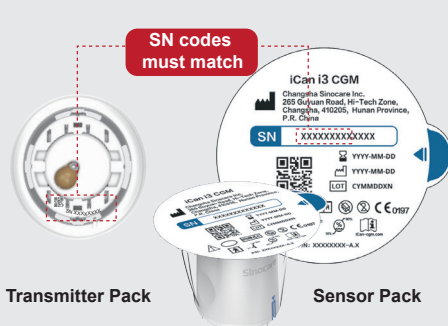
2 Pair with Transmitter

Step 1: Pull out the transmitter pack



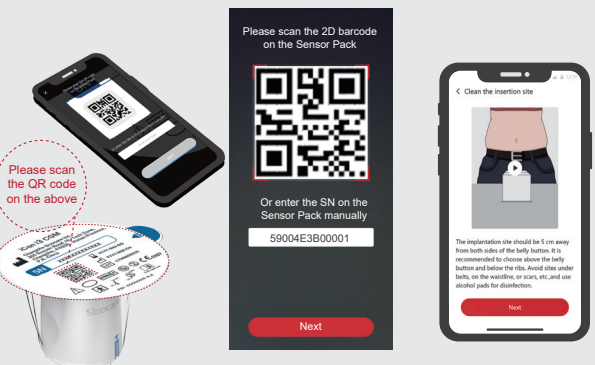
Pull out the Transmitter Pack from the bottom of the Sensor Pack box.

Step 2: Check SN (Serial Number) Codes to Match



Check the first 8 digits SN codes of Sensor Pack and Transmitter SN codes to match with each other before pairing your Sensor with the Transmitter.

Step 3: Pair with the Transmitter



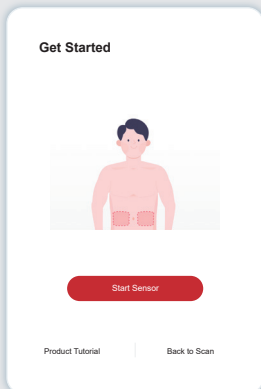
- Open your App and make sure to turn Bluetooth on.
- Login to your account, and using your App to scan the QR Code on the Sensor Pack.
- Pairing happens automatically. Do not close the app and keep it within 6 meters while you proceed to the next step. If you enter the SN code manually, please click "Next" to proceed.
- Keep your phone close by and prepare the insertion in next step

3 Insert the Sensor

Please follow the "Continuous Glucose Monitoring System Quick Start Guide" in your package to learn how to insert the sensor.

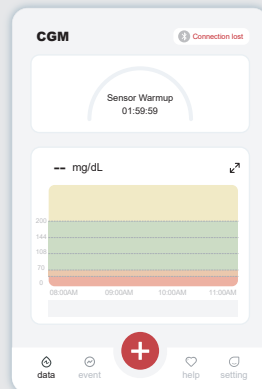
4 Start Monitoring

Step 1: Start CGM sensor



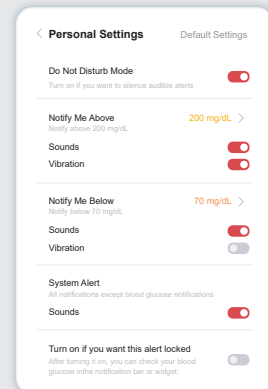
When the sensor is successfully inserted, your CGM App will prompt you to start the sensor. Tap "Start" for next step.

Step 2: Wait for sensor to warm-up



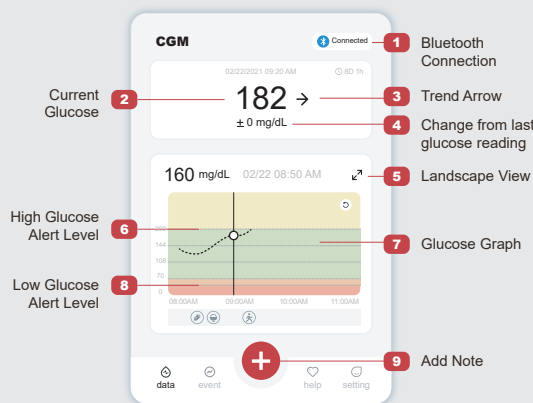
Tap "Start" to begin 2-hour sensor warm-up. There will not be any glucose readings or alerts until warm-up has ended. Keep the App open and your smart device within 20 feet of the transmitter during the sensor warm-up.

Step 3: Set up alerts



Caution: You will always receive an Urgent Low Glucose Alert by default when your sensor glucose value is 55 mg/dL or below. For detailed information regarding glucose alerts and system setup, go to "Important Safety Information" in the Instructions for Use.

Step 4: Check your glucose



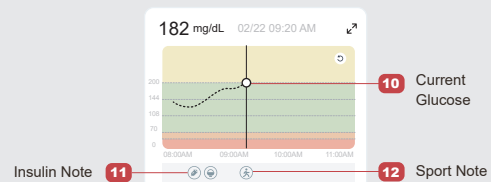
Glucose Trend Arrow

Direction your glucose is going

Arrow	What it means	Arrow	What it means
↗	Glucose rising rapidly	↘	Glucose falling slowly
↑	Glucose rising quickly	↓	Glucose falling quickly
↖	Glucose rising slowly	↙	Glucose falling rapidly
→	Glucose steady		

Glucose Graph

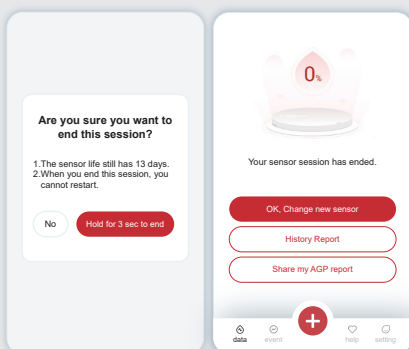
Graph of your current and stored glucose readings



5 End Monitoring

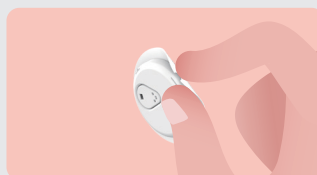
Step 1: Confirm the current session is completed

When the 15-day monitoring session is completed, the App will prompt you to change a new sensor or review the History Report.



Step 2: Remove the Sensor

- Pull up the edge of the adhesive.
- Slowly peel the adhesive away from your skin in one motion.



Step 3: Disposal

Do not touch the sensor and the sensor can not be re-used after removing. Discard the used sensor according to local regulation.

